



Developers:
AGRASEN REALTY

Site Address : Supremus-II, Nr. New Court,
Beside R K Plaza, Near Ward 11 Office,
30 Mt Dandiya Bazar Road, Vadodara

+91 7201 985 985 - 9120 871 871
supremus2@vihav.com | www.vihav.com

Architect

PLACEKINESIS ASSOCIATES,
AHMEDABAD

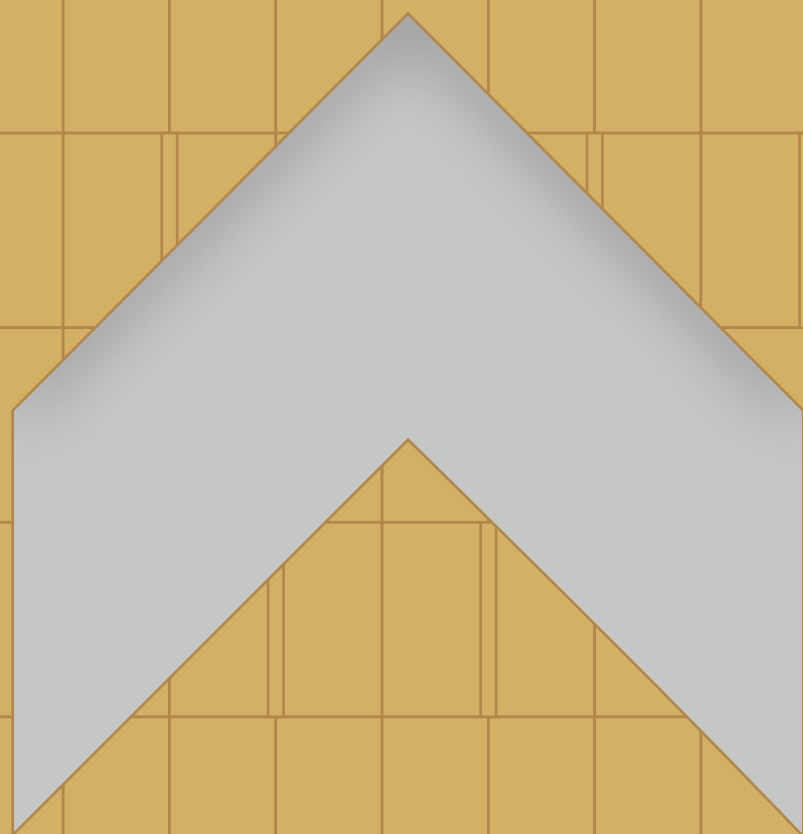
SPACEPLUS,
VADODARA

Structure

VYOM CONSULTANTS

RERA No. - PR/GJ/VADODARA/VADODARA/Others/CAA08657/240621
RERA Website- gujrera.gujarat.gov.in






Supremus II
SHOWROOMS | OFFICES



About Vihav

Vihav Group carries a rich legacy built on the trust and belief of our customers. We are known to be Vadodara's Leading real estate company having delivered residential, commercial projects with more than 1000 Happy Customers. Timely completion of projects coupled with strong planning and design innovation gives the group an edge over its competitors. As an organization, the group is also known for its employee-friendly and professional working environment. We are a group of young professionals with a combination of poise and entrepreneurial flair proving Excellence in Engineering.

Supremus-II

We at Vihav Group believe in creating Landmarks. After city's most successful commercial project Vihav Supremus, here is another Landmark for Vadodara.



What's Special in our design!

We aim to enhance viewer's experience. We believe in planning with the help of well researched concepts and bring innovative designs to the table. May it be the Showrooms for showcasing your Brands or Offices for an unmatched business experience, each and every square-feet of the Building shall give Pleasure of Comfort and Treat for Your Eyes. Practicality with Elegance is what Supremus-II is all about.



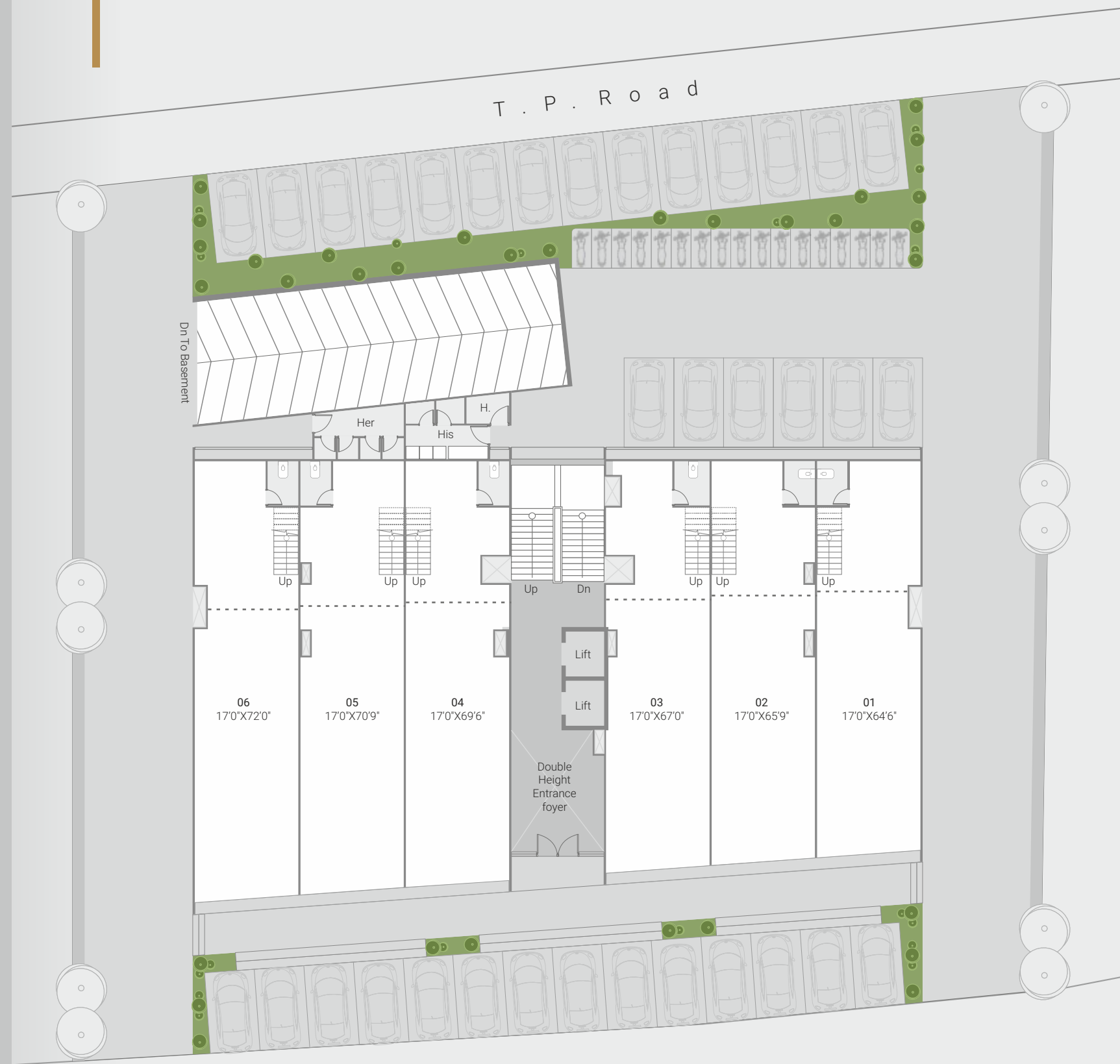


Crossing Corporate Benchmarks

Supremus-II shall welcome it's visitors to a never before seen Corporate ambience with Double Heighted & an eye pleasing entry Foyer right in the center of the building, an ambience that uplifts the standard of business meetings.

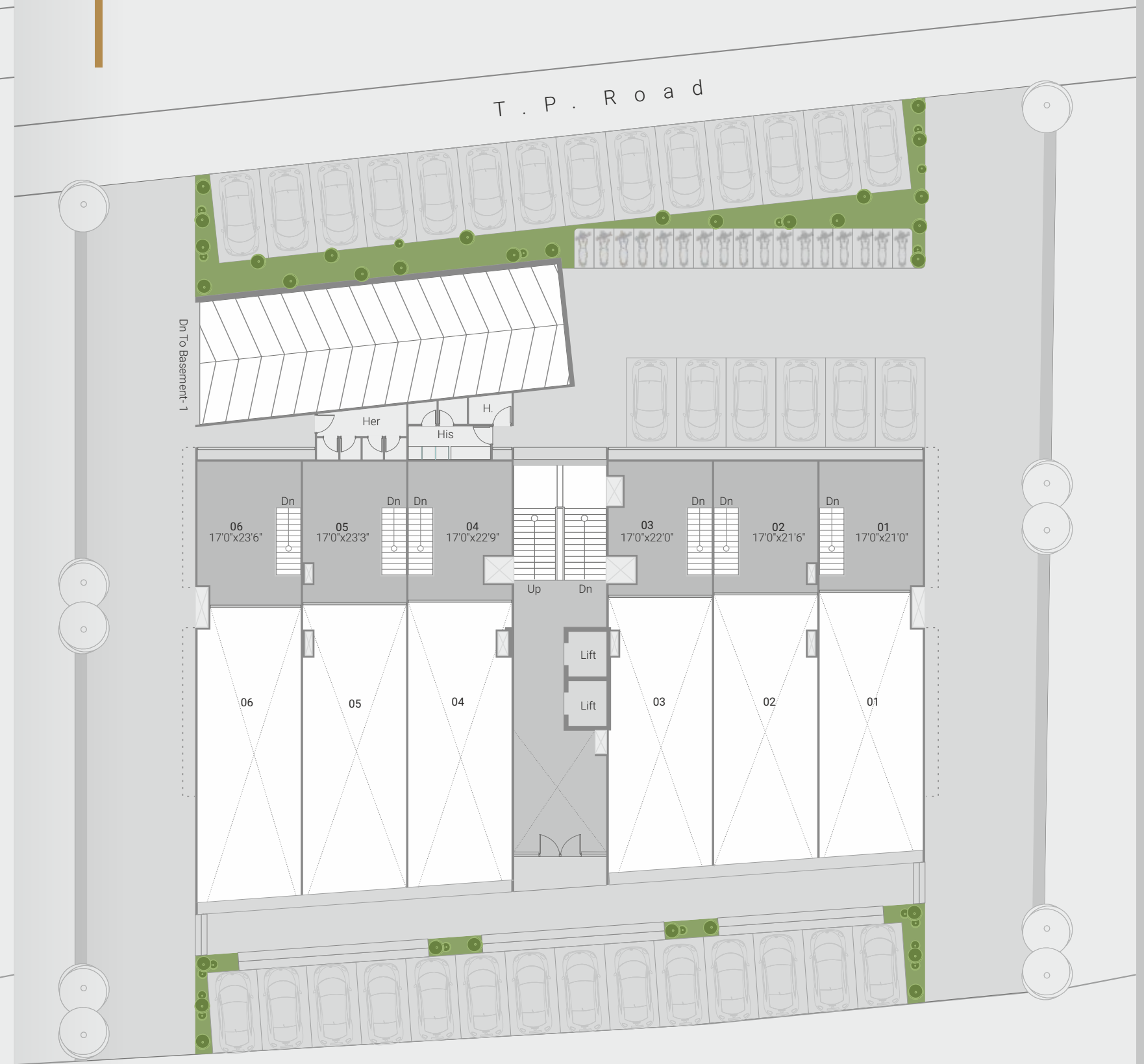


Ground
Floor Plan



30.00 Mtr. Wide Road

Mezzanine
Floor Plan



30.00 Mtr. Wide Road

*First
Floor Plan*



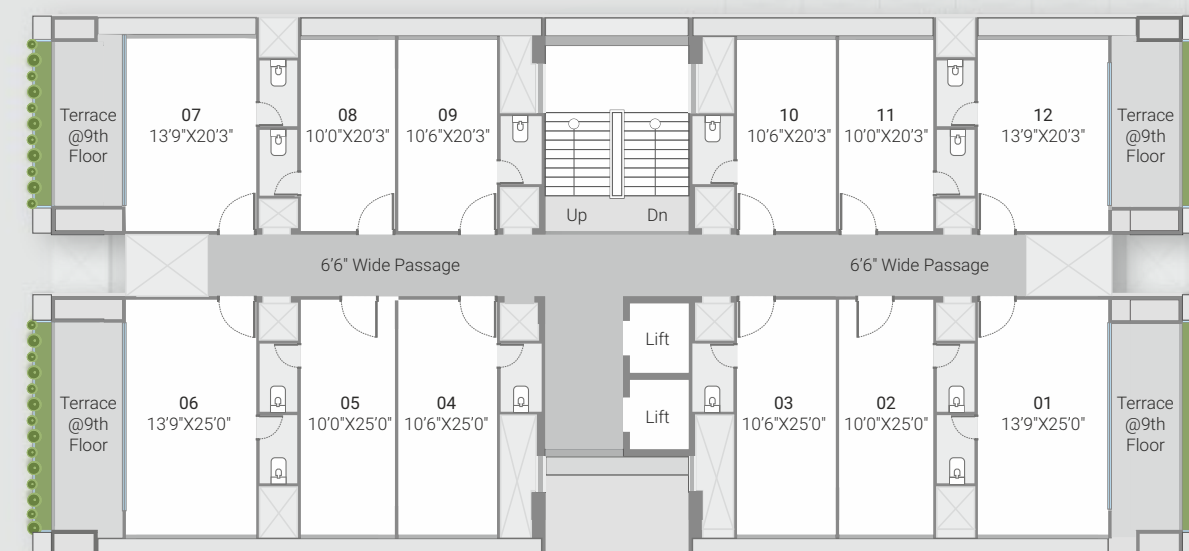
*Second
Floor Plan*



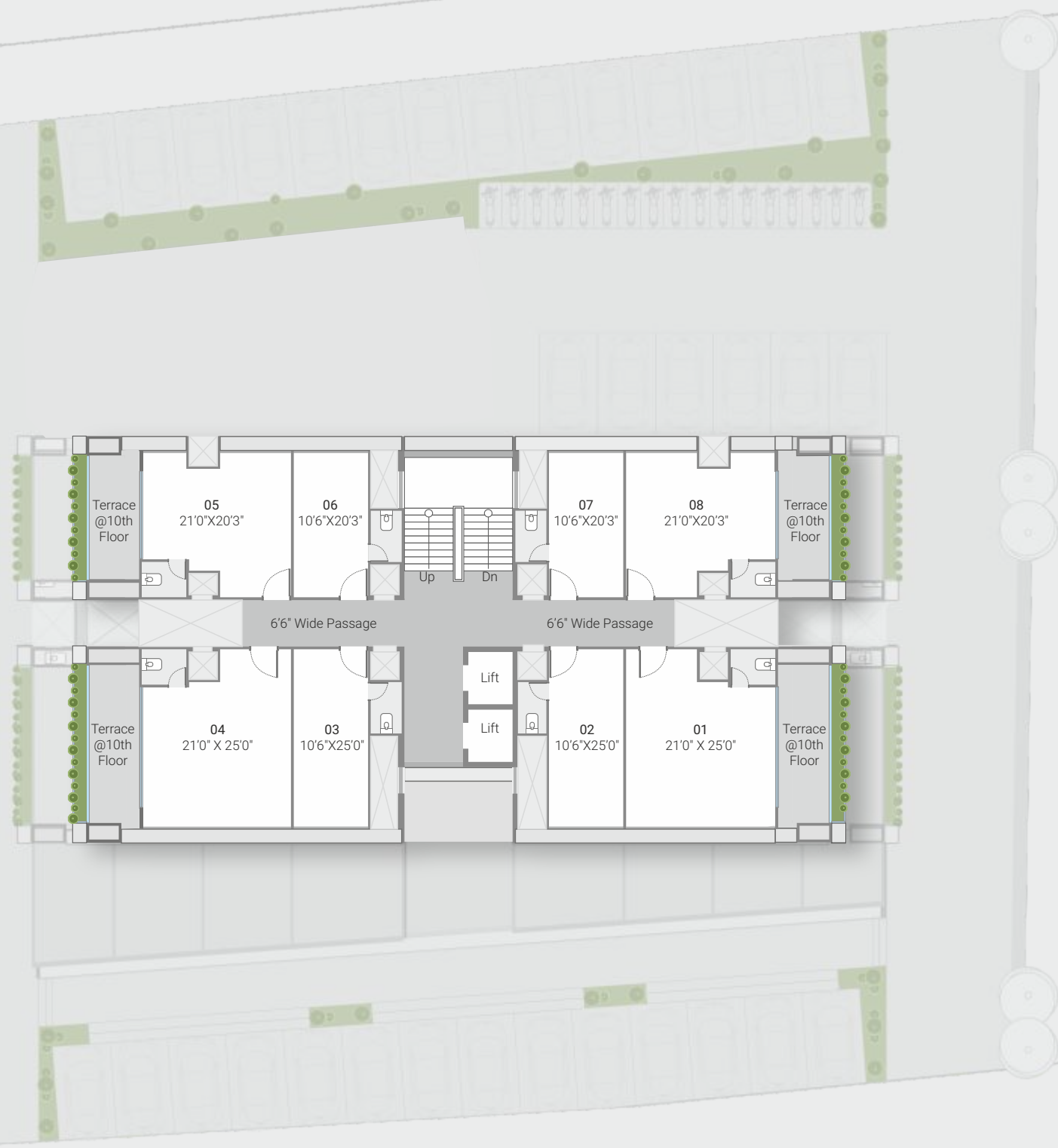
Third to Eighth Floor Plan



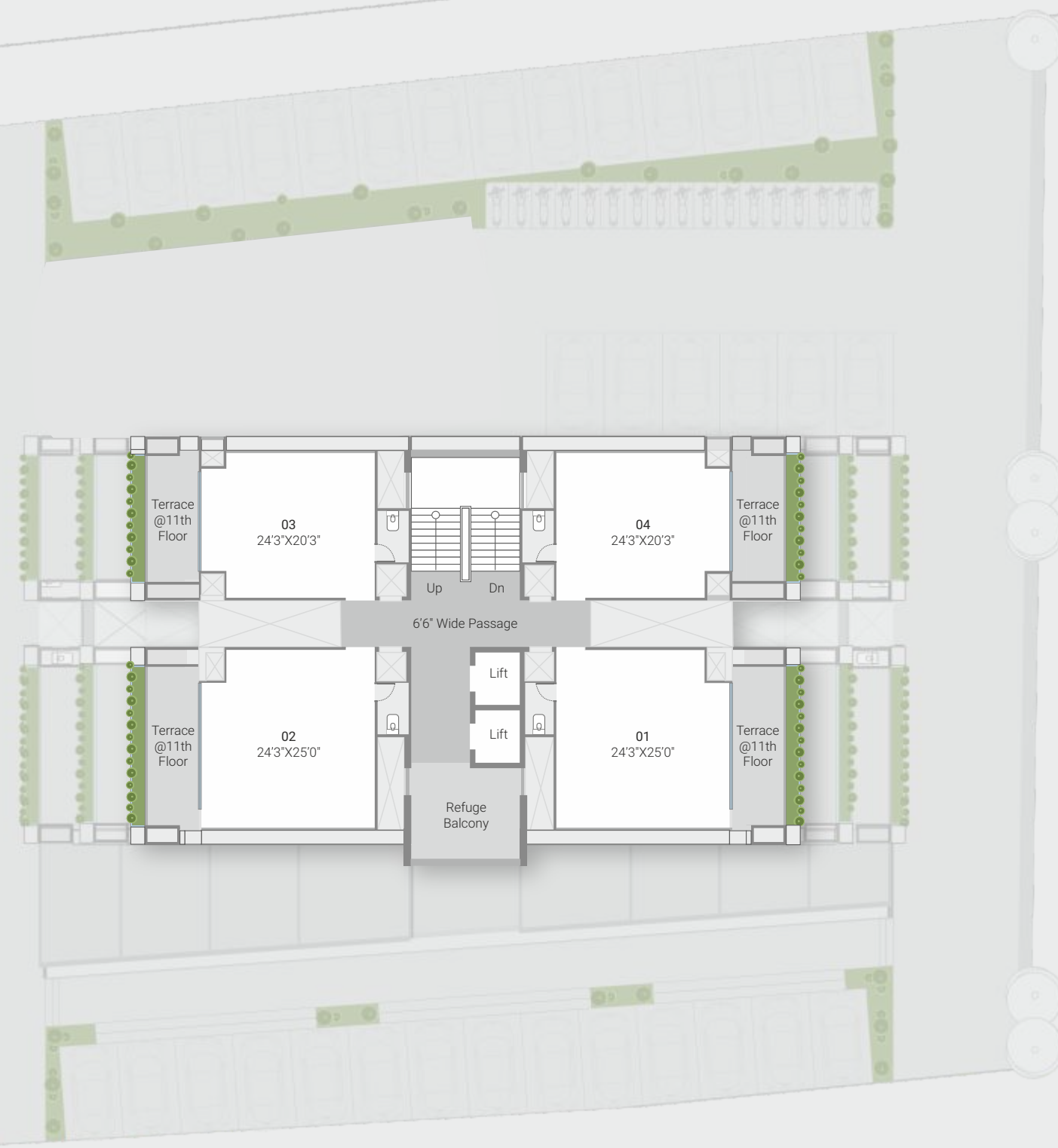
Ninth Floor Plan



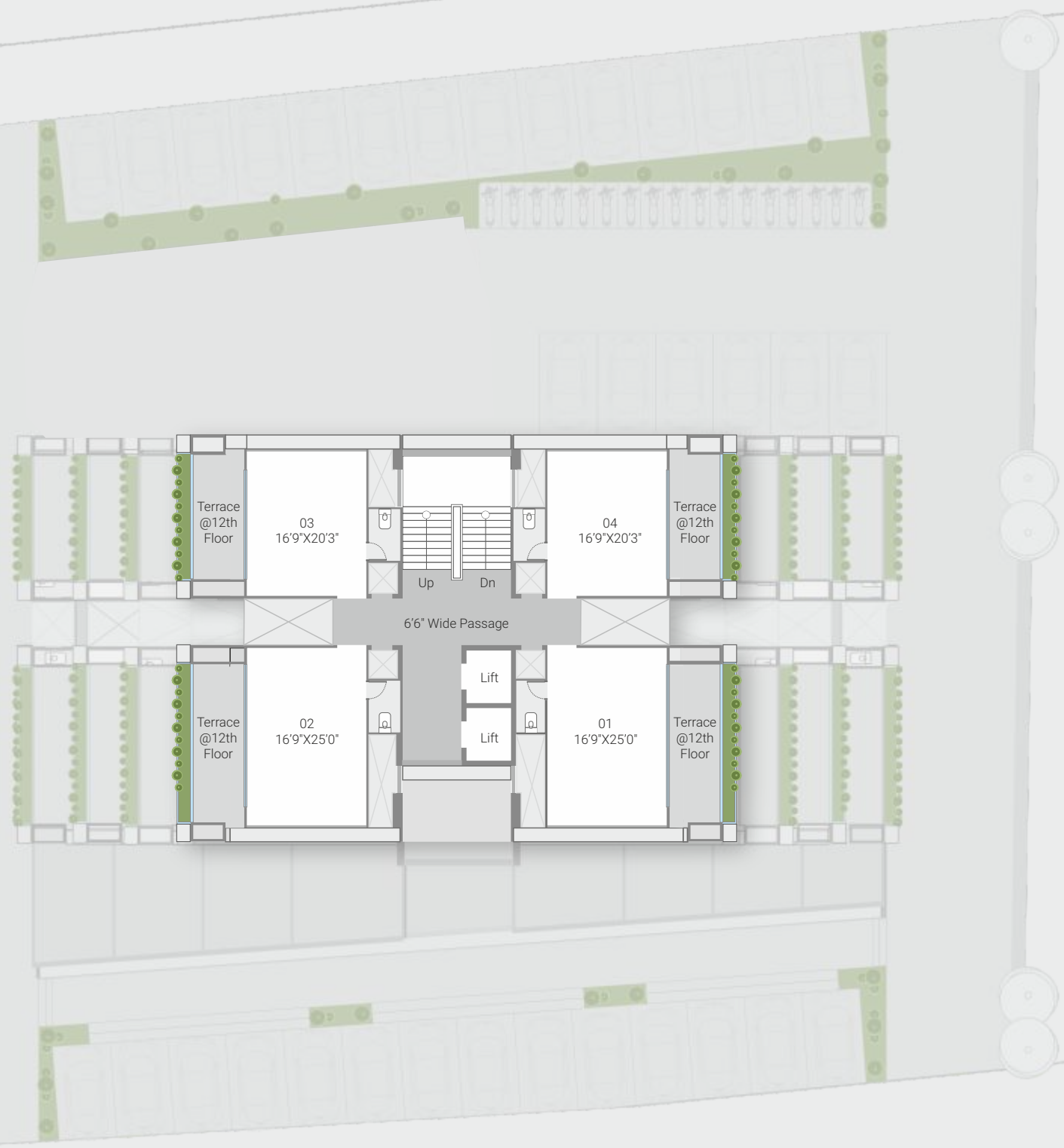
*Tenth
Floor Plan*



*Eleventh
Floor Plan*



Twelfth
Floor Plan



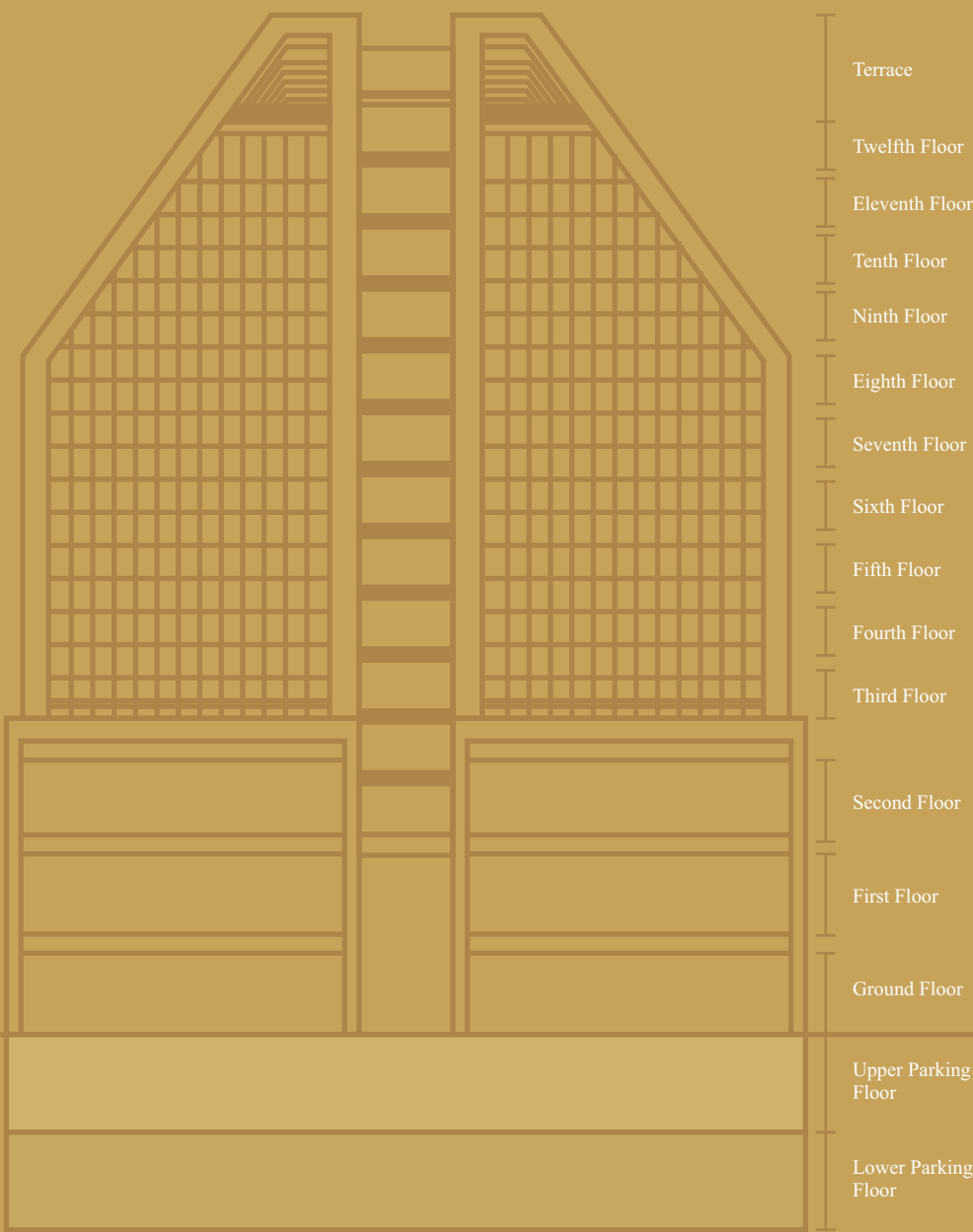
Why Choose to Invest in
Supremus II

- Built-in Washroom & Pantry in each units
- Self-Contained Offices
- Hi-Tech Security
- Prime Location
- Class Amenities
- Expansive floor-to-floor height
- Gym & Conference room at 13th level
- Exclusive Offices with Terrace Garden / Selected space with Pocket Terrace
- Reflective glazed layer glass facade
- Ample Parking space



Beautiful Building
Transform Cities

With cutting-edge systems and facilities, stunningly designed grand-arrival lobby, intelligent Elevator- System, state-of-the-art security surveillance and the list goes on. It is perfect for modern-day corporate environments. Featuring showrooms spaces on the ground, first and second level and office spaces across the other levels. Be it for an employee, client or a customer, Vihav Supremus II offers an unprecedented and seamless business experience with ease and perfection.







An Awesome Facade

Witness an amalgamation of the best Corporate Features and Elegant Design. An open span design that offers ample natural light in day time and an unmatched view of illumination of sparkling lights in night, which proves to be a perfect blend of Architectural and Engineering Brilliance. Shooting up the eye pleasing vertical panels and extraordinary exterior that wraps up to be an awesome façade.



